



SELECT**PREFAB**
SOLUTIONS

Contact Ed Patti
407-466-9987
ed@selectprefabsolutions.com

Access Floor Finishes

INNOVATIONS IN ACCESS FLOORING



ASM's Floor Finishes

*Functional
Durable
Beautiful*

Building on a successful past, ASM's history is a long one; long on innovation and on quality. Stringent testing and quality control checks developed by ASM's technical team have served our clients well over the decades. Across the board, ASM's product lines are subject to rigorous examination or floor finishes are no exception.

ASM has assembled a comprehensive array of floor finishes, some of which have been selected purely for their exceptional durability and beauty.

For many years, ASM has been providing specialized and high quality flooring products to architects, designers, contractors, distributors, and installers. ASM offers a flooring finish to satisfy every aesthetic requirement. Whether you are flooring the most rugged work space or creating a controlled environment for sensitive instrumentation, ASM has your flooring answer.

Contents

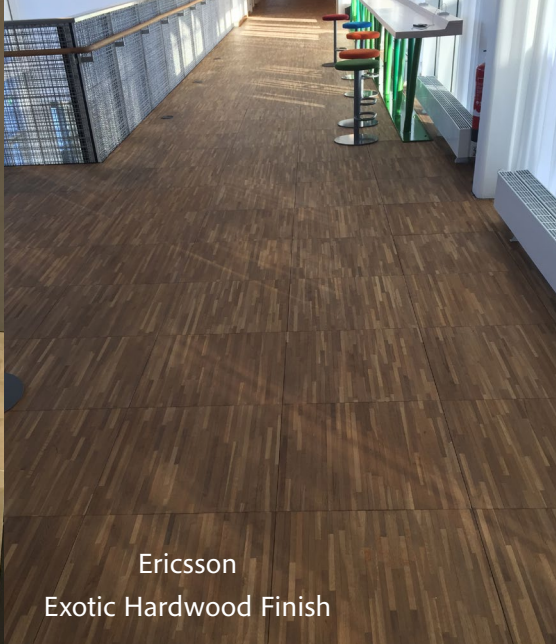
- 2 Contents
- 4-5 High Pressure Laminate Tiles
- 6-7 VPT Conductive Tiles: Contile™ & StatTile™
- 8-9 Rubber Tiles: Antistatic & Standard
- 10-19 Specialty Tiles

Need a custom color?

Send us your sample and we will match your custom color



Porcelain



Ericsson
Exotic Hardwood Finish



Acterna
VPT



Wood
High Pressure Laminate

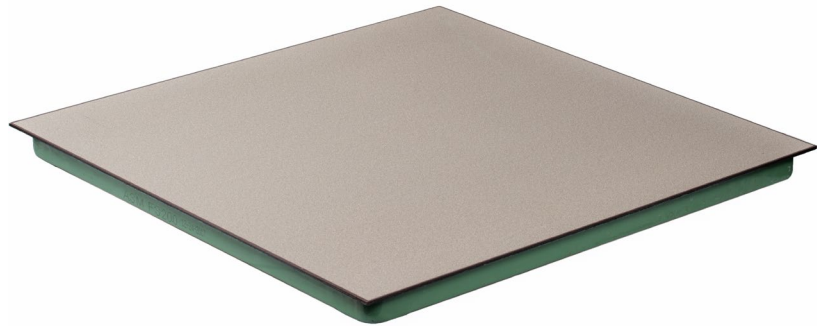
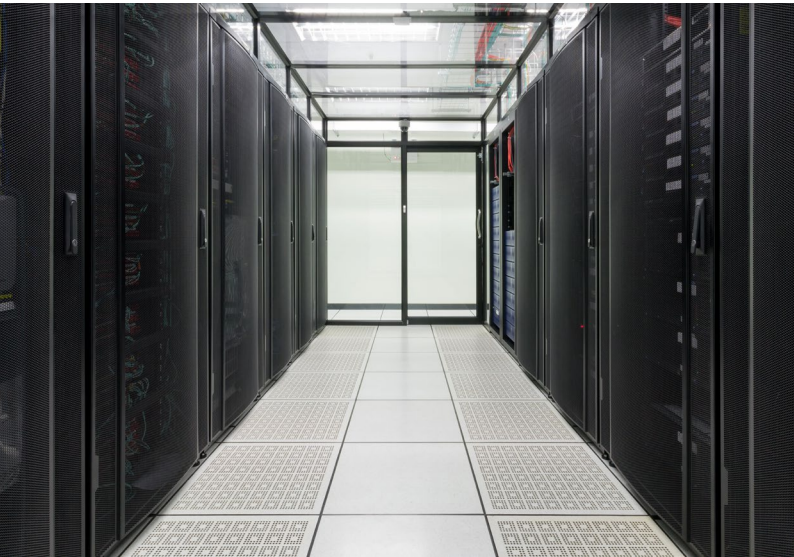


Ericsson
VPT

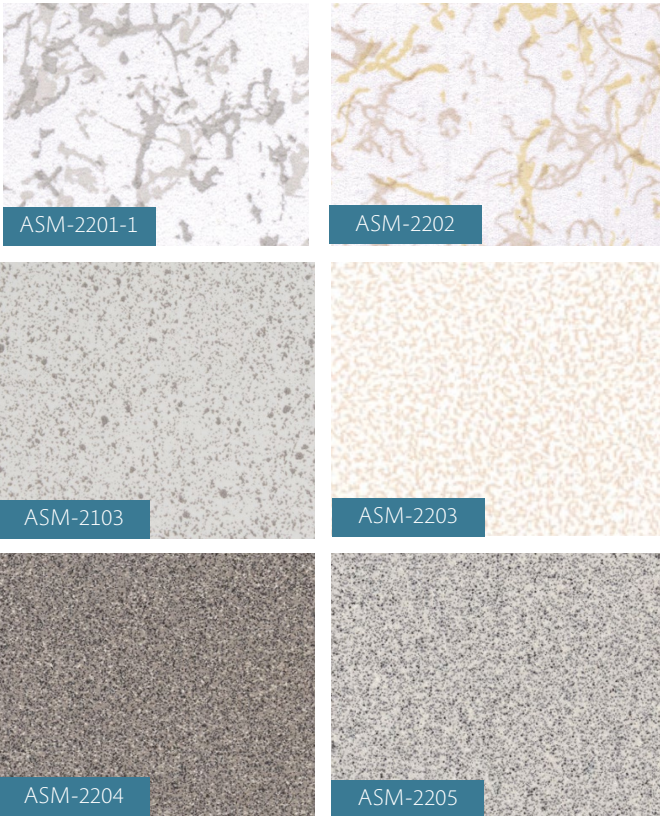
High Pressure Laminate & Solid Finishes

High pressure plastic laminate is used in 90% of all computer room applications, and is the largest product used on factory laminated floor finishes.

Laminate is a one piece tile (24" x 24"), and unlike vinyl, will provide a uniform finish with no joints. HPL has the advantage of not requiring wax or maintenance that could produce static problems in the data center.



ASM

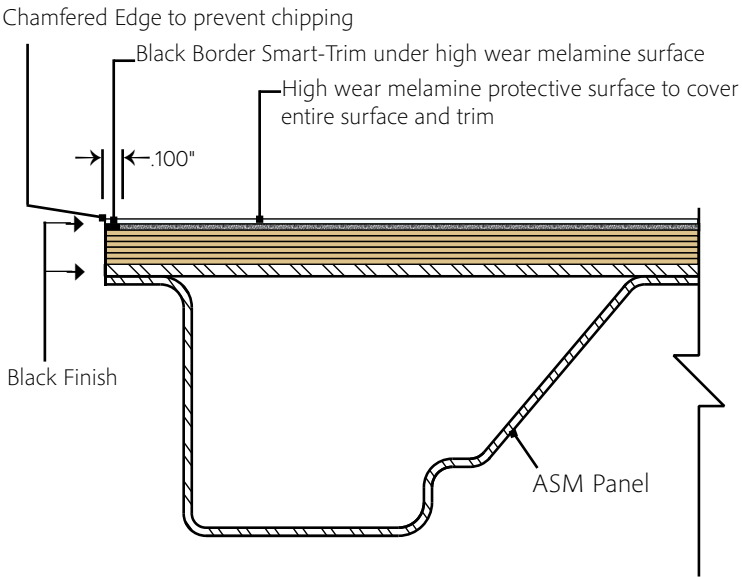


- 20 % Better wear surface results than competition
- Revolutionary trim that is printed into the laminate under the high wear finish
- No routing or removal of high wear surface
- No exposed paper core to absorb dirt and moisture
- No recess or step down. Reduces chipping and caster noise. Eliminates dirt trap
- No surface applied paint or inks - cannot wear off.

Smart - Trim (Patent Pending)



Innovations in Access Flooring



ASM Laminate Performance Specifications

Properties	NEMA Test Method	NEMA Standard	ASM Laminate Results
Electrical Resistance	NFPA 99	-	1.0x10 ⁶ - 2.0x10 ¹⁰
Stain Resistance	3.4	No Effect	No Effect
Boiling Water Resistance	3.5	No Effect	No Effect
High Temperature Resistance	3.6	Slight Effect	No Effect
Wear Resistance	3.13	3000 cycles/min.	3000+
Scuff Resistance	3.16	No Effect	No Effect

OUR EXPERIENCE & SOLUTION

SMOOTH
SEAMLESS
WEARPROOF



ConTile & StatTile

combines function with lasting
beauty when high performance
ESD flooring is a must

VPT uses a process to ensure the conductive elements are distributed evenly through the entire tile thickness. This, along with the finest materials, ensures a lifetime of consistent conductivity regardless of wear.

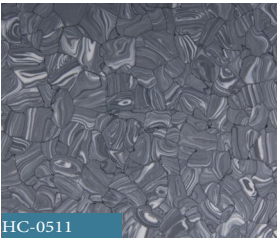
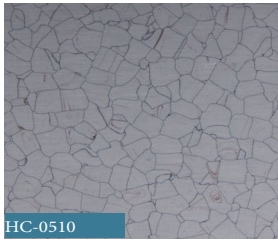
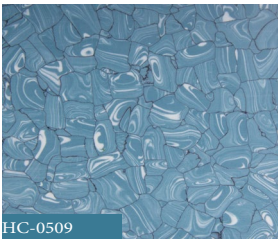
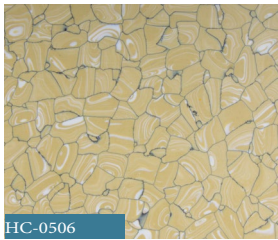
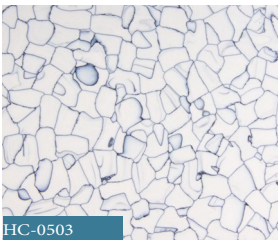
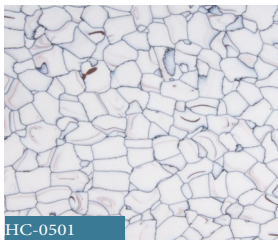
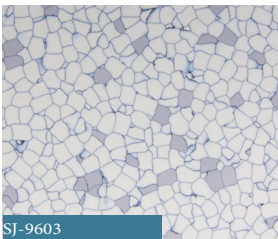
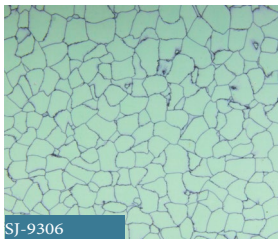
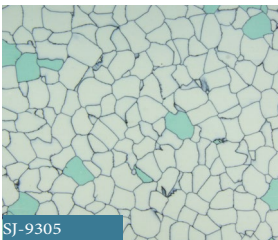
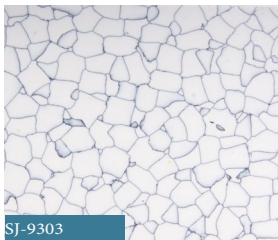
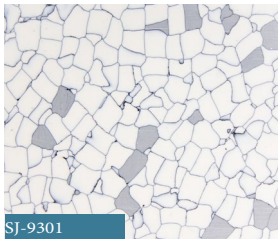
VPT carries a lifetime conductivity warranty.

VPT has a superior polished finish that does not require special treatments or waxes to maintain conductivity or appearance.

VPT has 12 colors to meet the needs of the most discerning designers.

VPT is resistant to very strong chemicals.

- . acids
- . strong alkalis
- . alcohols
- . aromatic solvents
- . aliphatic solvents



The use of VPT conductive or static dissipative floor covering checks the influence of electrostatic charges in the sensitive work places. The effects of electrostatic influence are very serious, and many of the incidents include damage to integrated circuits in semiconductor production and loss of valuable data from malfunction of computer equipment caused directly by a buildup of static electricity.

There are also some cases of inadvertent ignition of inflammable and explosive substances caused by static discharge.

When two objects with electrostatic charge come into contact or friction, electron movement occurs with electrification to positive and negative poles which are stationary at the points of mutual contact, a direct action against these points will cause instantaneous electric discharge, the result being damage to products, pollution or malfunction. Because of this, both UL and NFPA strongly recommend the use of conductive floor coverings.

Where VPT is recommended:



- . electronic manufacturing facilities
- . computer/server room installations
- . clean rooms
- . assembly factories
- . telecommunication rooms
- . health care laboratories



Performance	Conductive	Static Dissipative
Resistance: point to ground	2.5x10 ⁴ to 10 ⁶ Ω	10 ⁶ to 10 ⁸ Ω
Resistance: point to point	2.5x10 ⁴ to 10 ⁶ to 10 ⁶ Ω	
Static decay	5000 to 0 volts in < 0.01 sec.	5000 to 0 volts in < 0.2 sec.



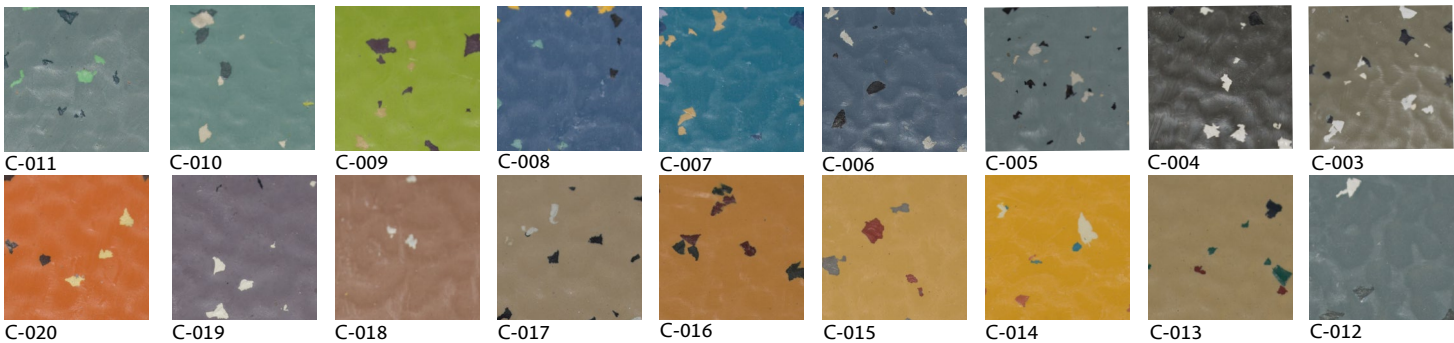
Anti-Static Rubber Tile

Rubber Properties

- . Highly wear-resistant
- . Extreme long life
- . Dirt-repellent
- . Cost-efficient maintenance
- . No seal or finish to maintain
- . Resistant to cigarette burns
- . High degree of fire-resistance
- . Excellent sound absorption properties
- . Joint-sealing not necessary

Special Properties

- . Electrostatic dissipative
- . Suitable for fork lift trucks
- . Extremely fire-resistant
- . Safe in fire-toxicological terms
- . Resistant to oils and greases
- . Extremely impact-resistant



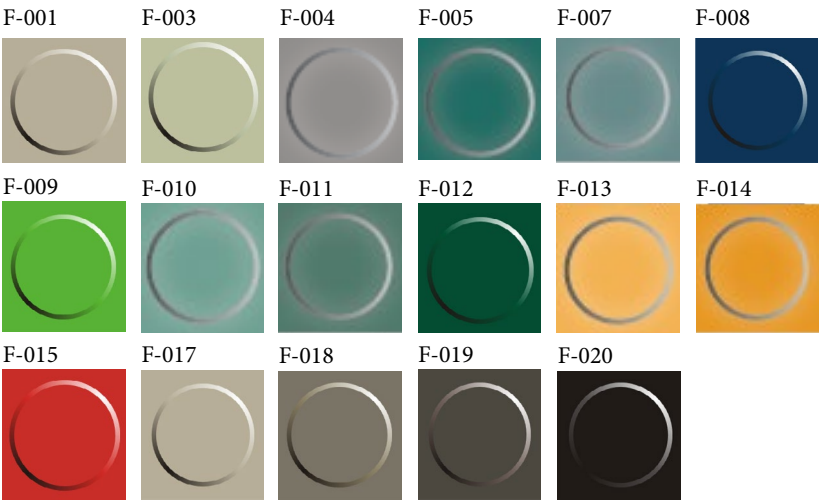
Available in a hammered finish or smooth finish

Standard Rubber Tile

Safe, beautiful and hard wearing for a variety of applications.

Electrostatic Protection

- . Static generation less than 20 volts per AATCC-134
- . Easy to maintain - no conductive wax necessary
- . Chemical and hot solder resistant
- . Resistant to most oils and grease
- . Ultra low vibration
- . Outgassing according to ASTM-E-595-84 VCM less than 1.2%



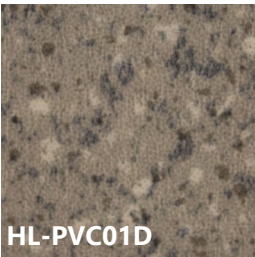
- Data Centers
- Health care facilities
- Industrial buildings
- High traffic public venues
- Leisure facilities
- Airports and terminals
- Schools and institutions
- Office buildings

Test	Average Results
Length & Width Size Deviation	± 0.1%
Diagonal Corners Squareness Deviation	≥ 0.008" (0.20 mm)
Hardness Shore "A" Durometer	> 85
Tensile-Strength	> 1450 psi (10 Mpa)
Bending Resistance (3/4" metal rod)	No Effect
Peeling Strength	≥ 5620 lbf/in (25 kN/mm)
Wear Resistance (mm/5N) Roller Type	≤ 150
Thermal Stability (dimensional change)	≤ ± 0.4%
Fire Resistance	Yes
Resistance to Cigarette Burns	Third Degree
Resistance to Chemicals (carbon black ink)	No Visible Change
Electrical Properties Volume Resistance	≥ 10 ¹⁰ Ω
Light Resistance	Third Degree
Brittleness Temperature	≤ 5° F (-15° C)
Indentation Residual Level	≤ 0.010" (0.25 mm)

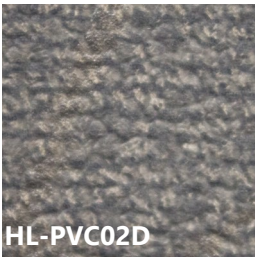


LUXURY VINYL

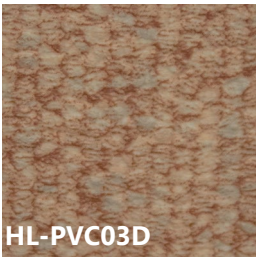
Low-maintenance floor that takes on traffic and spills. Vinyl flooring lets you transform any area with gorgeously realistic and durable designs.



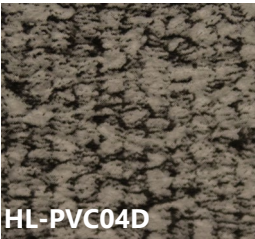
HL-PVC01D



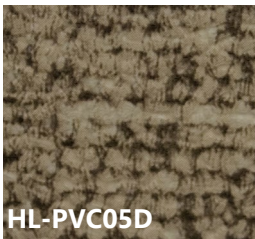
HL-PVC02D



HL-PVC03D



HL-PVC04D



HL-PVC05D



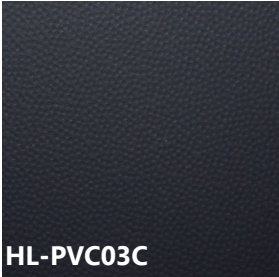
HL-PVC06D



HL-PVC01C



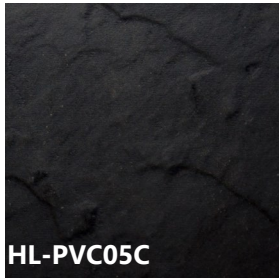
HL-PVC02C



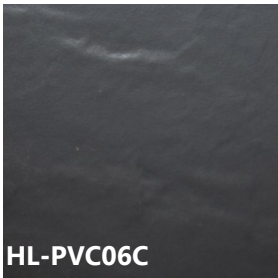
HL-PVC03C



HL-PVC04C



HL-PVC05C



HL-PVC06C

- Office Buildings
- Lobby & Reception Areas
- Board Rooms
- Corridors
- Administrative Offices
- Sales Offices
- Airports

PORCELAIN FINISH

Your design ideas in one place



Spyscape Museum NYC
Porcelain Tile

Versatile and elegant, porcelain floor tiles are innovative products that is gaining popularity among builders.



HL-CT01



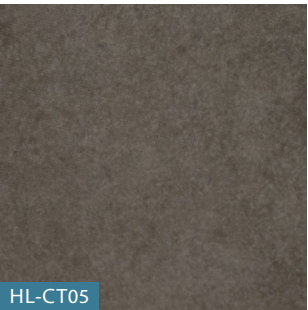
HL-CT02



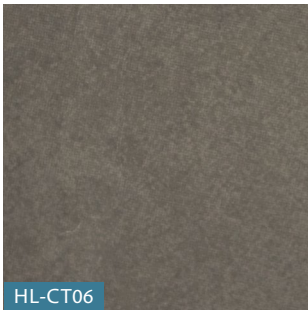
HL-CT03



HL-CT04



HL-CT05



HL-CT06

Beautifully Selected Porcelain

- Office Buildings
- Lobby & Reception Areas
- Board Rooms
- Corridors
- Administrative Offices
- Sales Offices
- Airports



* NOTE: CA200 PANEL SERIES - CONTACT YOUR SALES REPRESENTATIVE FOR DETAILS



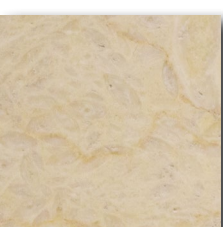
NATURAL MARBLE FINISH



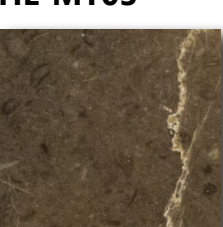
HL-MT01



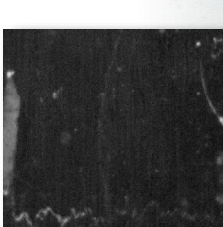
HL-MT02



HL-MT03



HL-MT04



HL-MT05



HL-MT06



Marble tile is a natural floor surface well known for its beauty, style, and elegance. Instantly elevate the appearance of your space.

APPLICATIONS

- Office Buildings
- Lobby & Reception Areas
- Board Rooms
- Corridors
- Administrative Offices
- Sales Offices
- Airports



NATURAL GRANITE FINISH



HL-ST01



HL-ST02



HL-ST03



HL-ST04



HL-ST05



HL-ST06

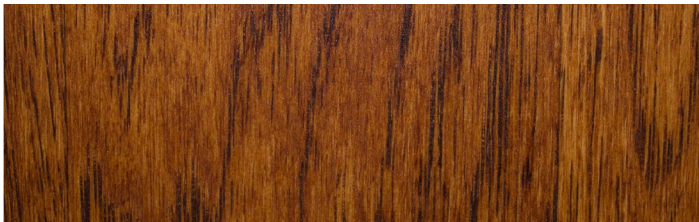
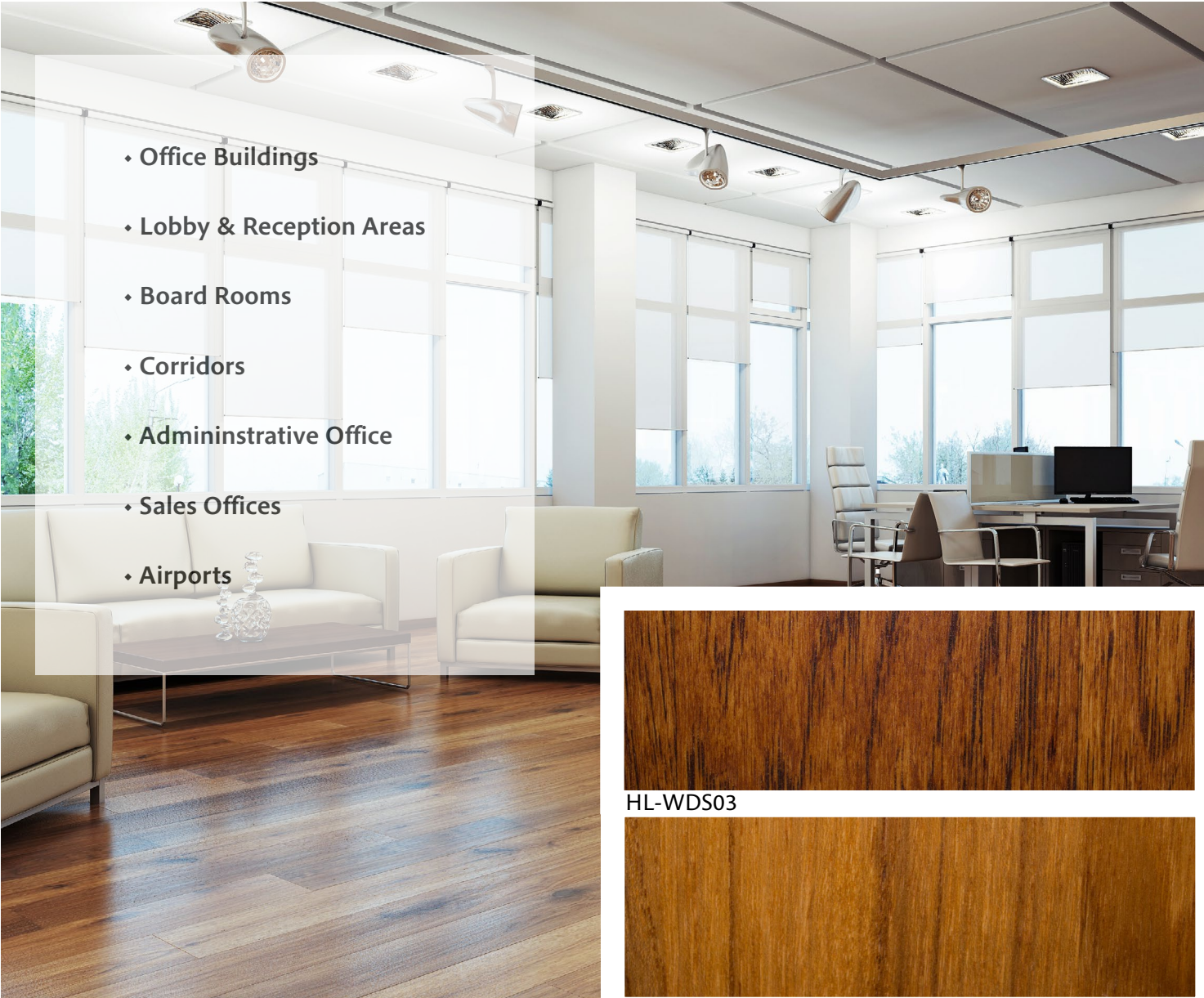


APPLICATIONS

- Office Buildings
- Lobby & Reception Areas
- Board Rooms
- Corridors
- Administrative Offices
- Sales Offices
- Airports



Hardwood



HL-WDS03



HL-WDS04



HL-WDS01



HL-WDS02



HL-WDS05



HL-WDS06

Wood Grain High Pressure Laminate

Add warmth to your interior with wood grain high pressure laminates.

ASM's wood grain high pressure laminate is the surface solution for high-use applications in offices, lobbies/ reception areas, educational institutions, sales offices, board rooms, and more.



Light Sapele 3021



Sapele 3022



Light Beech 3023



Cherry 3038



Maple 3065



Beech 3040



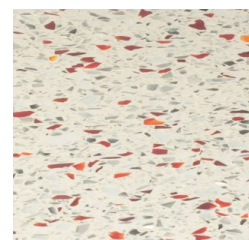
Light Cherry 3045



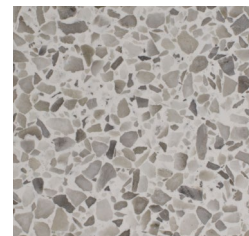
Terrazzo



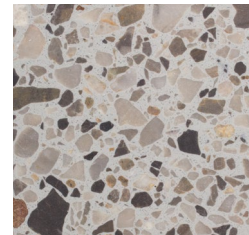
- Office Buildings
- Lobby & Reception Areas
- Board Rooms
- Corridors
- Administrative Office
- Sales Offices
- Airports



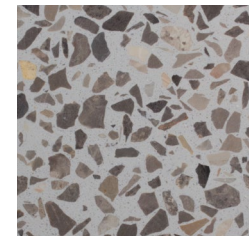
T-102



T-103



T-181



T-182



T-183



T-191



ASM MODULAR SYSTEMS, INC.

No matter what your architectural requirements, style or budget, ASM can provide the answer to your flooring challenges.

Use of this tile is [environmentally clean](#) and prevents off gassing for a healthy work environment and helps contribute towards LEEDS.

ASM incorporates a [wide range of naturals](#) and composites in its repertory of tile materials. Whether you need the elegant glamour of stone, warmth of wood, or the color impact of solid vinyl, ASM has a finish for you.

[Today's construction](#) typically requires technical properties exceeding the traditional boundaries of aesthetics and durability. The work environment of the present and future demand a sensitivity to instrumentation: building finishes that have been engineered to create a safe environment for electronics and equipment.

[Unparalleled engineering](#) and quality control, innovative materials to accommodate today's refined design trends.

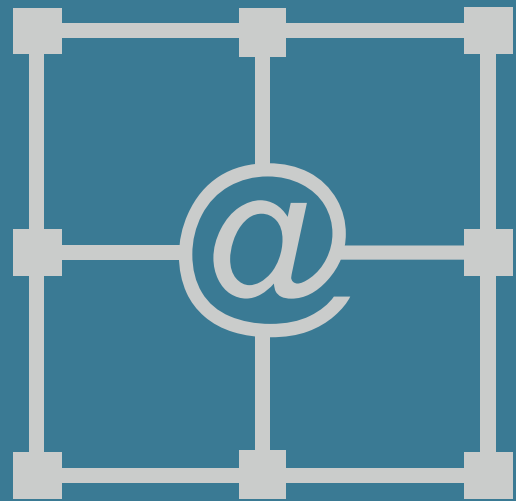
With its classic look, durability, and low maintenance, Terrazzo is a great selection for your next project.

For more information:
[ASM Modular Systems, Inc.](#)
 (843) 534-1110
[www.asmproducts.com](#)

SPECIALTY FLOORS



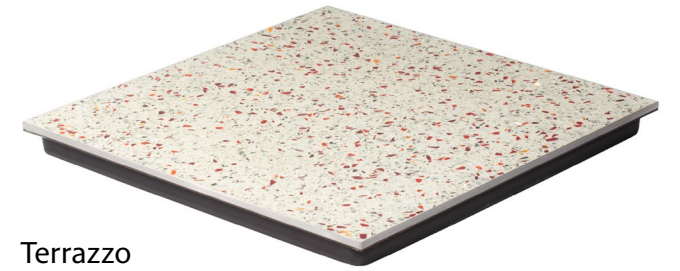
COMMERCIAL FLOORING SOLUTIONS



www.asmproducts.com



Rubber



Terrazzo



CS-Wood



Granite



Marble



Exotic Wood



Luxury Vinyl



Porcelain



Helping you become
LEED Certified



USA Design & Engineering + USA Quality & Testing
GLOBAL VISION

Laminates

Woods

Porcelain

Marble

Rubber

ESD & Luxury Vinyls

HPL

Granite

Exotic Hardwood

Terrazzo



SELECT**PREFAB**
SOLUTIONS

Ph: 407-466-9987 Fax: 407-347-7295

Email: ed@selectprefabsolutions.com

Contact: Ed Patti

ASM is a member of:



201908